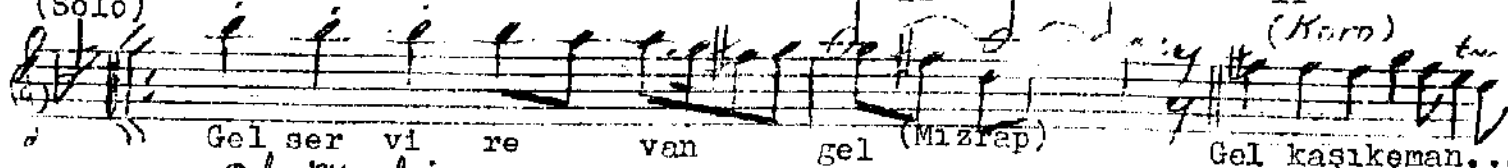
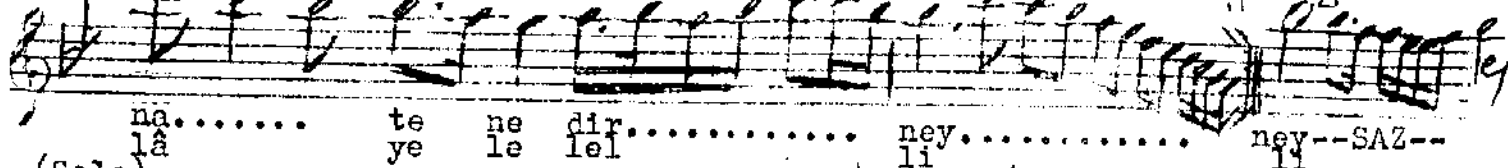
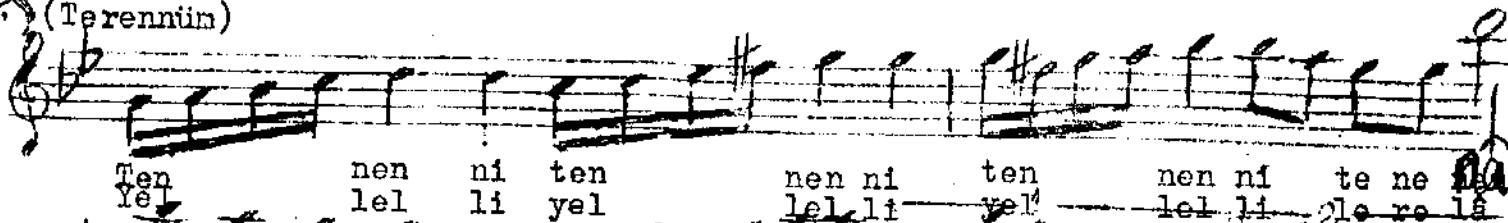
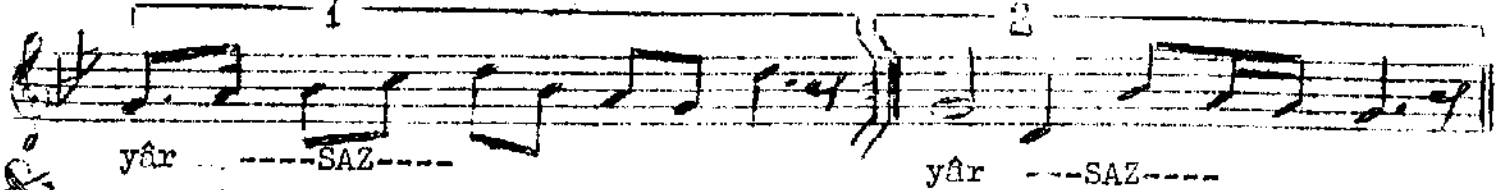
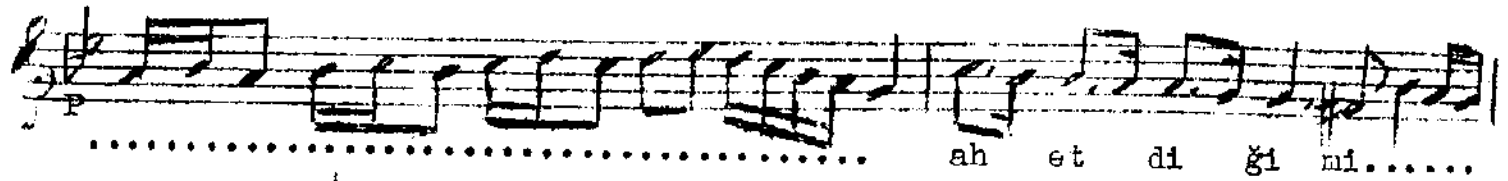
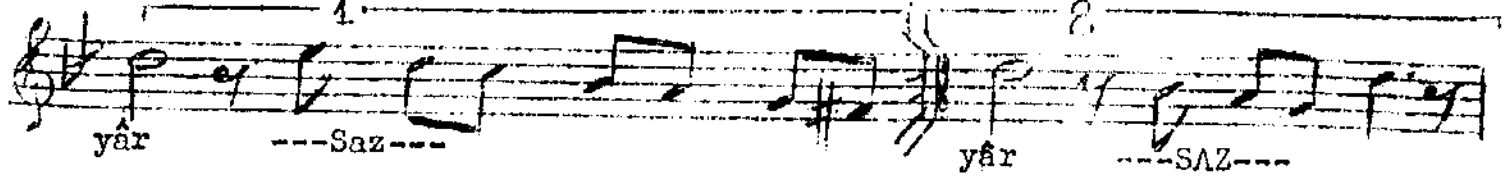
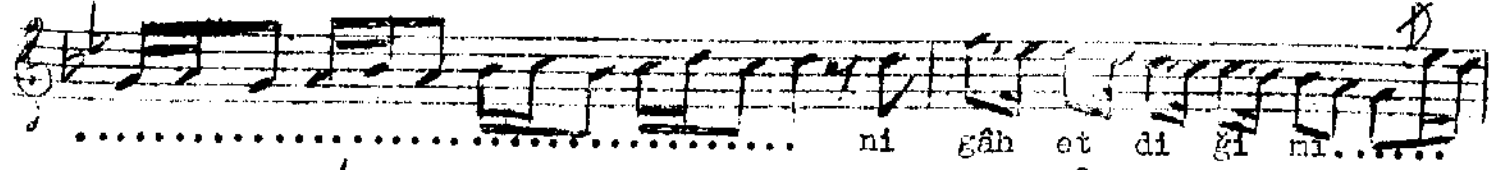


NIRAVEND YÜRÜK SEMAI

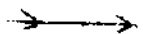
Söz:Fuzûlî

Yürük Semai

Heste:M. Mureddin Selç



Geldildenihan  
(2.cide  
bu işaretli  
kısmı geçer)



Göz ya şı dö küp na..... le vü an

..... an et di ği ni.....

yâr ---SAZ--- yâr ---SAZ---

Ey pa di şe hi hü..... sün.....

ta rah..... hum..... ça..... ği dir...

yâr ---SAZ--- dir ---SAZ---

Af fey le ki bil mi..... şin gü na

..... h gü nah et di ği ni....

yâr ---SAZ--- yâr ---SAZ--- yâr (Mazrap)

Ruhsarına aybetme nigâh ettiğimi  
Göz yaşı döküp nalevü ah ettiğimi  
Ey padişahi büsün-terahhum çağıdır  
Affıyle ki bilmişim günah ettiğimi.  
Terennüm:

..... ey sevgili mentaş...